

**SERVICE PARTS CATALOGUE  
LISTE DE PIECES DE RECHANGE  
ERSATZTEILLISTE  
CATALOGO RICAMBIO  
ONDERDELENLIJST**

**SPERRY  NEW HOLLAND**

**MERCEDES-BENZ ENGINE  
TYPE OM 402 / 900.004**

**ISSUE 496906**

**SERVICE PARTS CATALOGUE  
LISTE DE PIECES DE RECHANGE  
ERSATZTEILLISTE  
CATALOGO RICAMBIO  
ONDERDELENLIJST**

**MERCEDES-BENZ ENGINE  
TYPE OM 402/900.004**

REPLACES ISSUE  
REPLACE EDITION  
ERSETZT AUSGABE  
SOSTITUE EDIZIONE  
VERVANGT UITGAVE } 496805

**ISSUE 496906**

**SPERRY  NEW HOLLAND**

DIVISION OF SPERRY RAND BELGIUM N.V.  
B-8210 ZEDELGEM - BELGIE  
Tel. 050/20 00 20  
Telegr. NEWHOLZED  
Telex 81127 & 81377

© 1976 by DIVISION OF SPERRY RAND BELGIUM NAAMLOZE VENNOOTSCHAP  
ZEDELGEM - BELGIUM



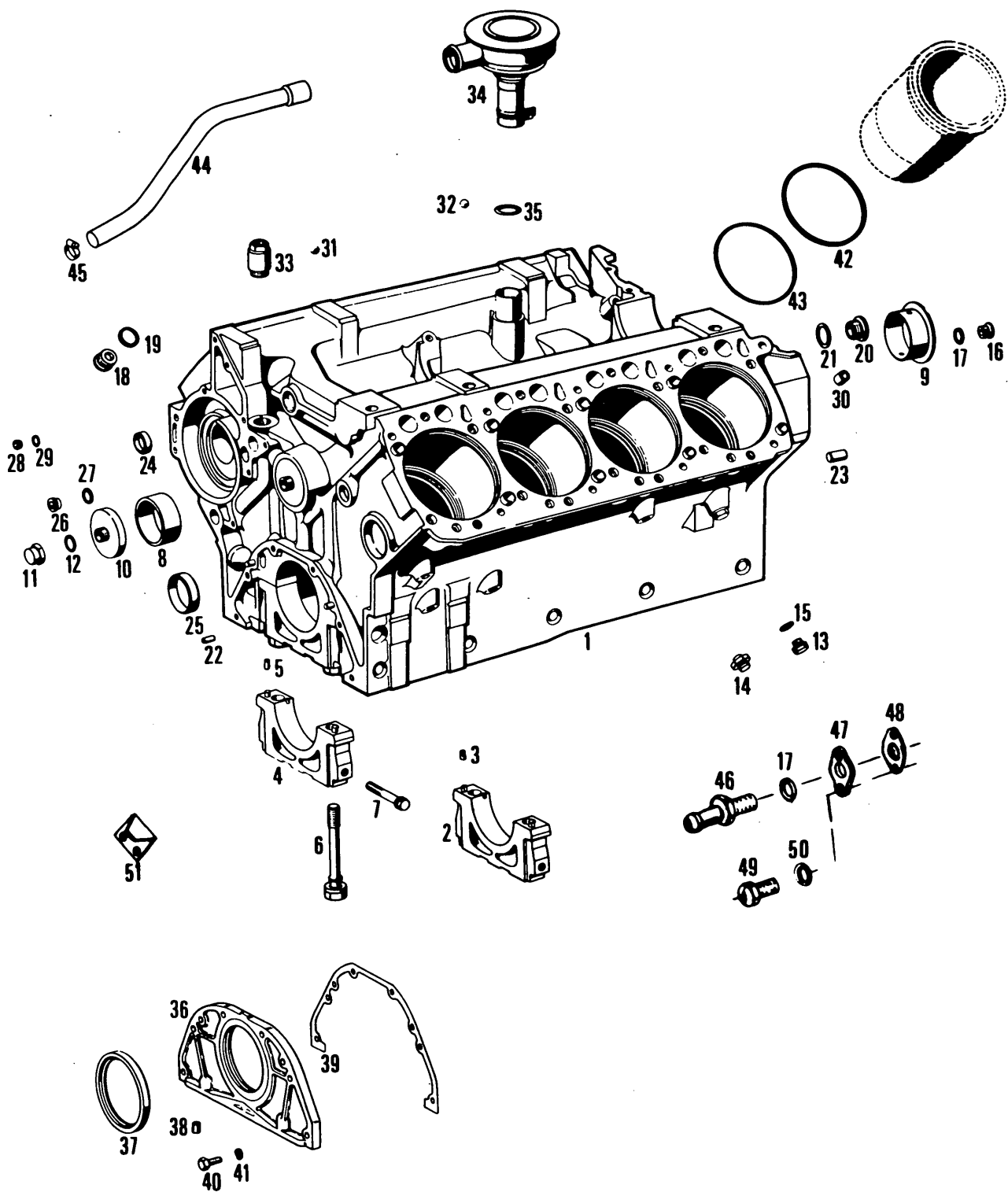
CONTENTS	Page
Crankcase .....	5 - B 2
Oilsump .....	7 - B 4
Cylinder head and cover .....	9 - B 6
Crankshaft .....	13 - B10
Timing .....	17 - B14
Injection pump .....	19 - B16
Fuel filter .....	21 - B18
Manifolds .....	23 - B20
Starting motor - alternator .....	25 - B22
Oil pump .....	27 - B24
Oil filter .....	29 - B26
Waterpump .....	31 - C 2
Index .....	32 - L 1

TABLE	Page
Bloc - moteur .....	5 - B 2
Carter d'huile .....	7 - B 4
Culasse et couvercle .....	9 - B 6
Villebrequin .....	13 - B10
Distribution .....	17 - B14
Pompe d'injection .....	19 - B16
Filtre a carburant .....	21 - B18
Collecteurs .....	23 - B20
Demarreur - alternateur .....	25 - B22
Pompe à huile .....	27 - B24
Filtre à huile .....	29 - B26
Pompe à eau .....	31 - C 2
Index .....	32 - L 1

INHALT	Seite
Kurbelgehäuse .....	5 - B 2
Ölwanne .....	7 - B 4
Zylinderkopf und haube .....	9 - B 6
Kurbelwelle .....	13 - B10
Steuerung .....	17 - B14
Einspritzpumpe .....	19 - B16
Kraftstofffilter .....	21 - B18
Sougrohr - Auspuffrohr .....	23 - B20
Anlasser - Lichtmaschine .....	25 - B22
Ölpumpe .....	27 - B24
Ölfilter .....	29 - B26
Wasserpumpe .....	31 - C 2
Index .....	32 - L 1

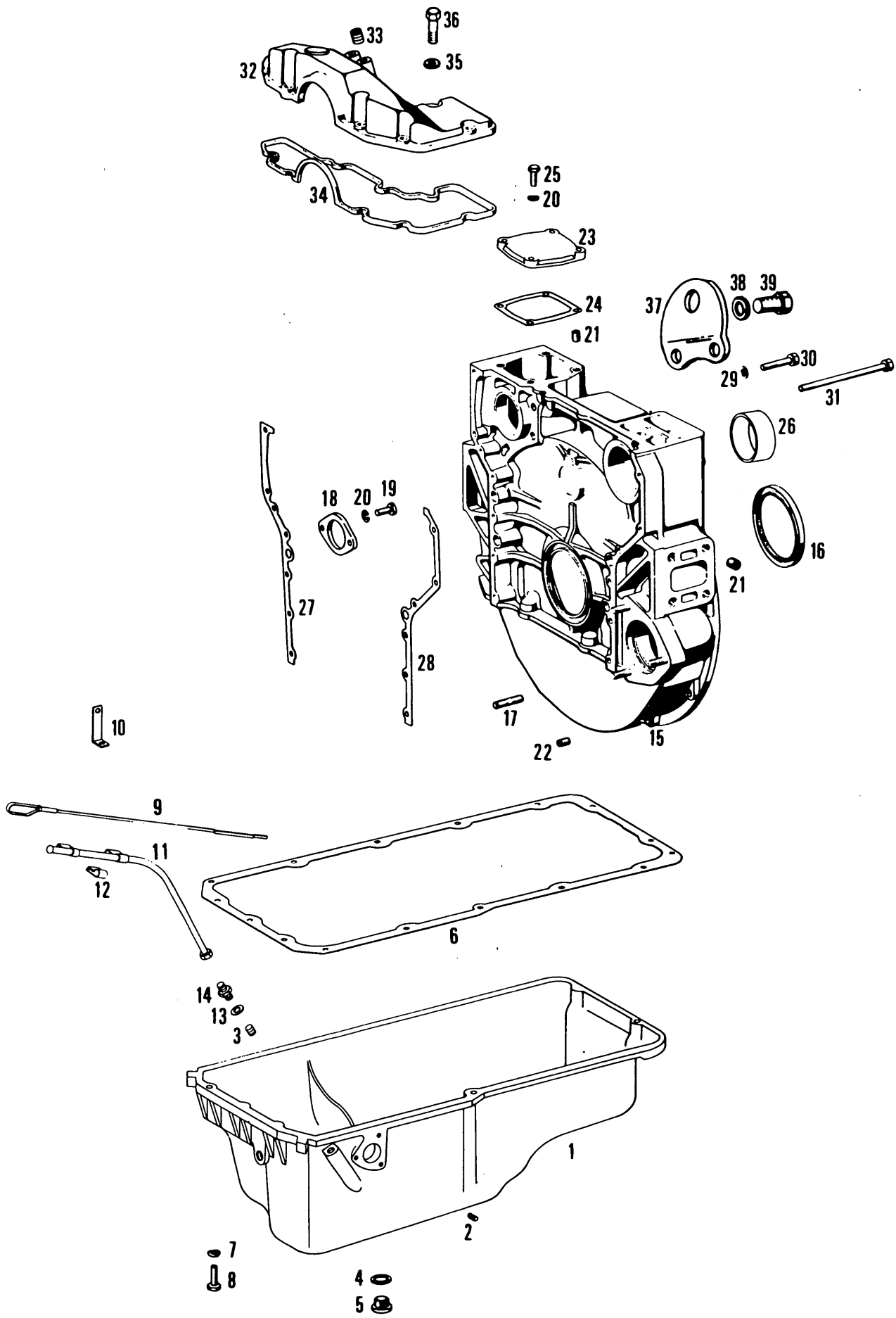
INHOUD	Blz.
Motorblok .....	5 - B 2
Oliepan .....	7 - B 4
Cilinderkop en deksel .....	9 - B 6
Krukas .....	13 - B10
Distributie .....	17 - B14
Injectie pomp .....	19 - B16
Brandstofffilter .....	21 - B18
Uit- & inlaat .....	23 - B20
Starter - Alternator .....	25 - B22
Oliepomp .....	27 - B24
Oliefilter .....	29 - B26
Waterpomp .....	31 - C 2
Index .....	32 - L 1

INDICE	Pagina
Basamento motore .....	5 - B 2
Coppa dell'olio .....	7 - B 4
Testata cilindri .....	9 - B 6
Albero motore .....	13 - B10
Distribuzione .....	17 - B14
Pumpa d'iniezione .....	19 - B16
Filtro carburante .....	21 - B18
Collettore .....	23 - B20
Motorino d'avviamento - Alternatore .....	25 - B22
Pompa olio .....	27 - B24
Filtro olio .....	29 - B26
Pompa aqua .....	31 - C 2
Indice .....	32 - L 1



CRANCKCASE  
 BLOC-MOTEUR  
 KURBELGEHAUSE  
 BASAMENTO MOTORE  
 MOTORBLOK

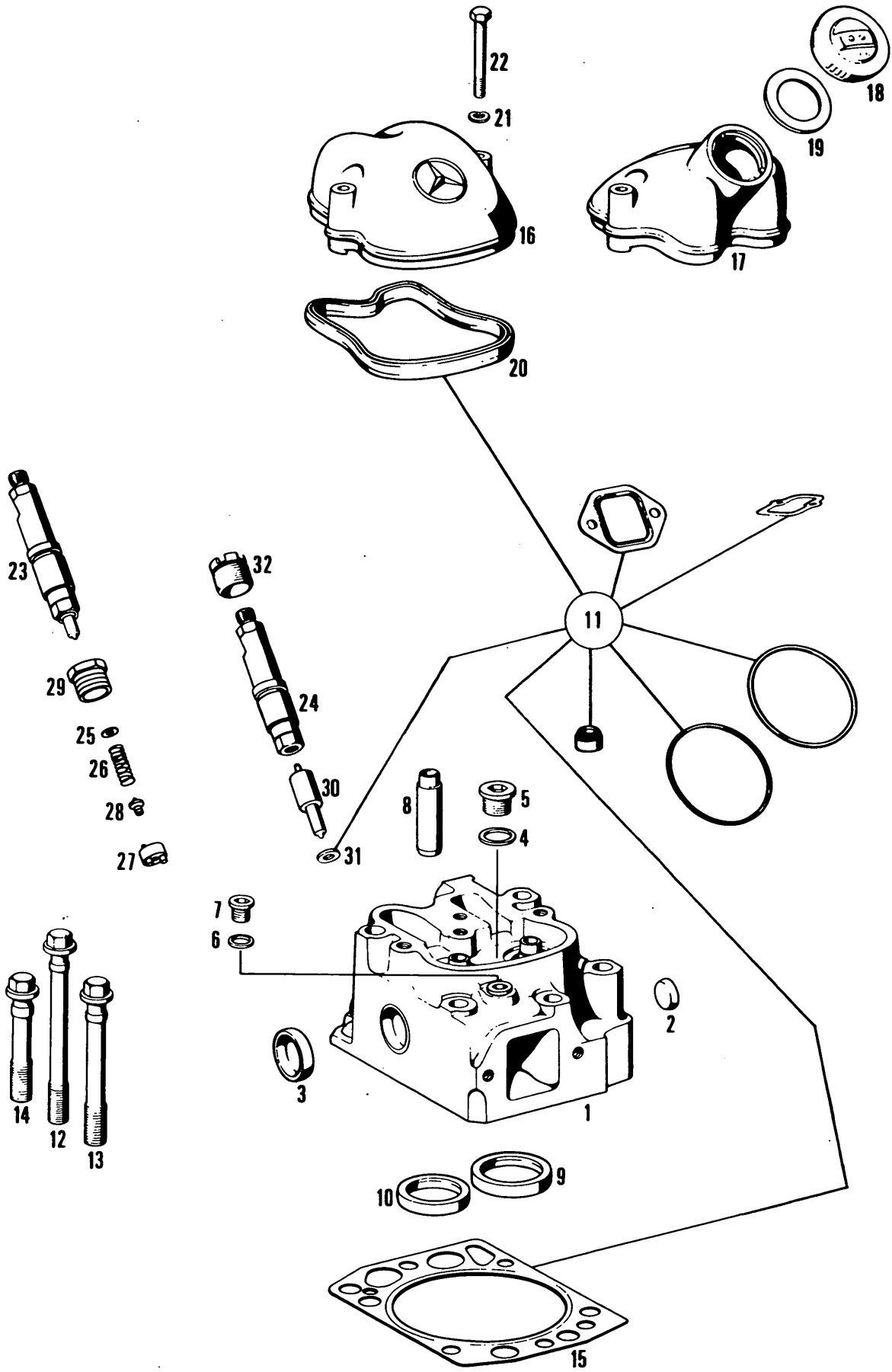
Fig.	Mercedes Part No	Clayson Part No	Qty.	Description	Remarks
1			1	Crankcase	
2	NS		1	Bearing cap	NS = Not serviced
3	401 991 01 62		2	Centre pin	
4	NS		4	Bearing cap	NS = Not serviced
5	000007 008223		8	Centre pin	
6	403 011 02 71		10	Bolt	
7	900170 012012		10	Bolt	
8	403 051 04 10		4	Camshaft bearing	
9	403 051 05 10		1	Camshaft bearing	
10	403 011 02 21		1	Cover	
11	007605 022000		1	Block nut	
12	007603 022103		1	Seal ring	
13	007604 014106		AR	Screw plug	
14	915013 008002		AR	Nipple	
15	007603 014103		AR	Seal ring	
16	000908 018000		1	Screw plug	
17	007603 018101		2	Seal ring	
18	000997 3532		4	Screw plug	
19	007603 020104		AR	Seal ring	
20	000908 030002		4	Screw plug	
21	007603 030101		4	Seal ring	
22	000007 008210		2	Sleeve	
23	000007 016215		2	Sleeve	
24	403 997 04 20		3	Cover	
25	346 997 00 20		1	Cover	Up to Eng. 069878
26	000908 022001		AR	Screw plug	
27	007603 022103		AR	Seal ring	
28	000908 016000		AR	Screw plug	
29	007603 016108		AR	Seal ring	
30	000 991 13 41		16	Sleeve	Up to Eng. 129660
31	001 981 07 85		2	Ball	Up to Eng. 129660
32	005401 999012		1	Ball	
33	403 011 00 77		1	Spacer	
34	403 010 0062		1	Oil separator	
35	000 997 53 48		1	Seal ring	
36	403 010 05 14		1	Cover	
37	003 997 13 47		1	Seal ring	
38	900421 008004		3	Screw plug	
39	403 011 00 80		1	Gasket	
40	000933 008153		6	Screw	
41	000137 008202		6	Lockwasher	
42	008 997 47 45		16	Seal ring	
43	001 989 29 20		1	Seal ring material	
44	403 018 00 82		1	Pipe	
45	916017 025000		2	Clamp	
46	355 203 05 08		1	Breather pipe	
47	403 997 03 50		1	Flange	
48	071511 040018		1	Gasket	
49	000933 010035		2	Screw	
50	000127 010202		2	Lockwasher	
51	401 032 00 15		1	Timing pointer	



OILSUMP  
 CARTER D'HUILE  
 ÖLWANNE  
 COPPA DELL' OLIO  
 OLIEPAN

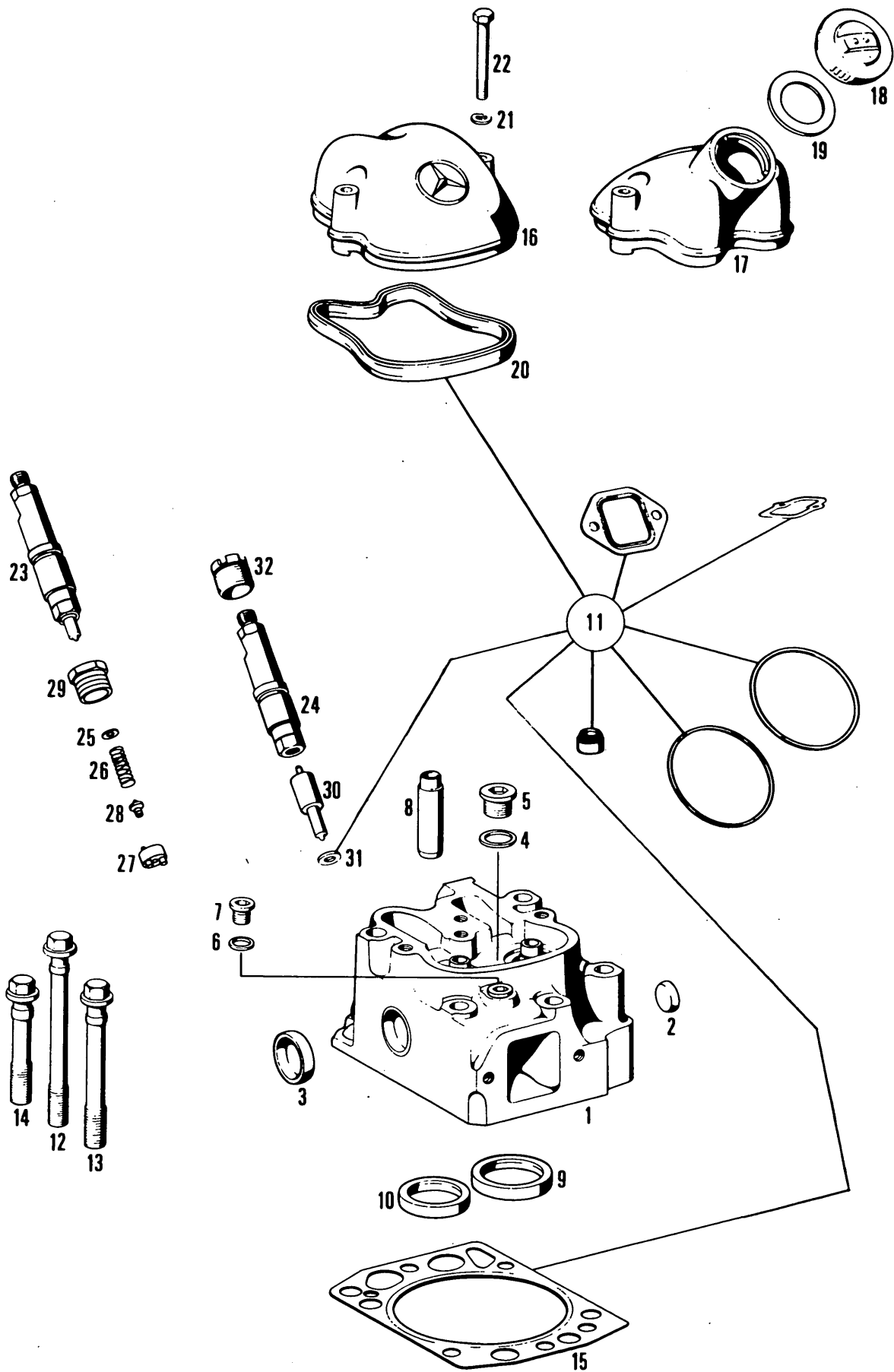
Fig.	Mercedes Part No	Clayson Part No	Qty.	Description	Remarks
1	402 010 18 13		1	Sump	
2	900421 026000		1	Stud	
3	900421 014000		1	Stud	
4	007603 026305		1	Seal ring	
5	403 997 00 32		1	Plug	
6	402 014 02 22		1	Gasket	
7	000433 008406		16	Washer	
8	000931 008046		10	Screw	
	000931 008233		6	Screw	
9	401 010 20 72		1	Oil lever indicator	
10	387 501 15 20		1	Support	
11	401 010 02 66		1	Guide tube	
12	403 995 01 44		1	Clamp	
	000127 006204		1	Lockwasher	
	000934 006007		1	Nut	
	000933 006102		1	Screw	
13	007603 014103		1	Seal ring	
14	352 997 04 72		1	Adaptor	
15	403 010 46 33		1	Timing case	
16	005 997 26 47		1	Seal ring	
17	000835 012029		3	Stud	
18	403 052 02 53		1	Flansch	
19	000933 008130		2	Screw	
20	000137 008204		AR	Lockwasher	
21	900421 008004		15	Screw plug	
22	900421 010002		15	Screw plug	
23	403 131 09 21		2	Cover	
24	403 131 07 80		2	Gasket	
25	000933 008152		8	Bolt	
26	403 977 08 20		1	Cover	
27	403 015 00 80		1	Gasket	
28	403 015 01 80		1	Gasket	
29	000137 010201		12	Lockwasher	NS
30	403 990 03 04		10	Screw	
31	403 990 04 04		2	Screw	
32	403 010 08 17		1	Cover	
33	900421 012006		2	Screw plug	
34	403 015 01 60		1	Gasket	
35	000137 008204		8	Lockwasher	
36	000933 008152		8	Screw	
37	403 223 08 41		1	Support	
38	000127 020201		2	Lockwasher	
39	000933 020008		2	Screw	





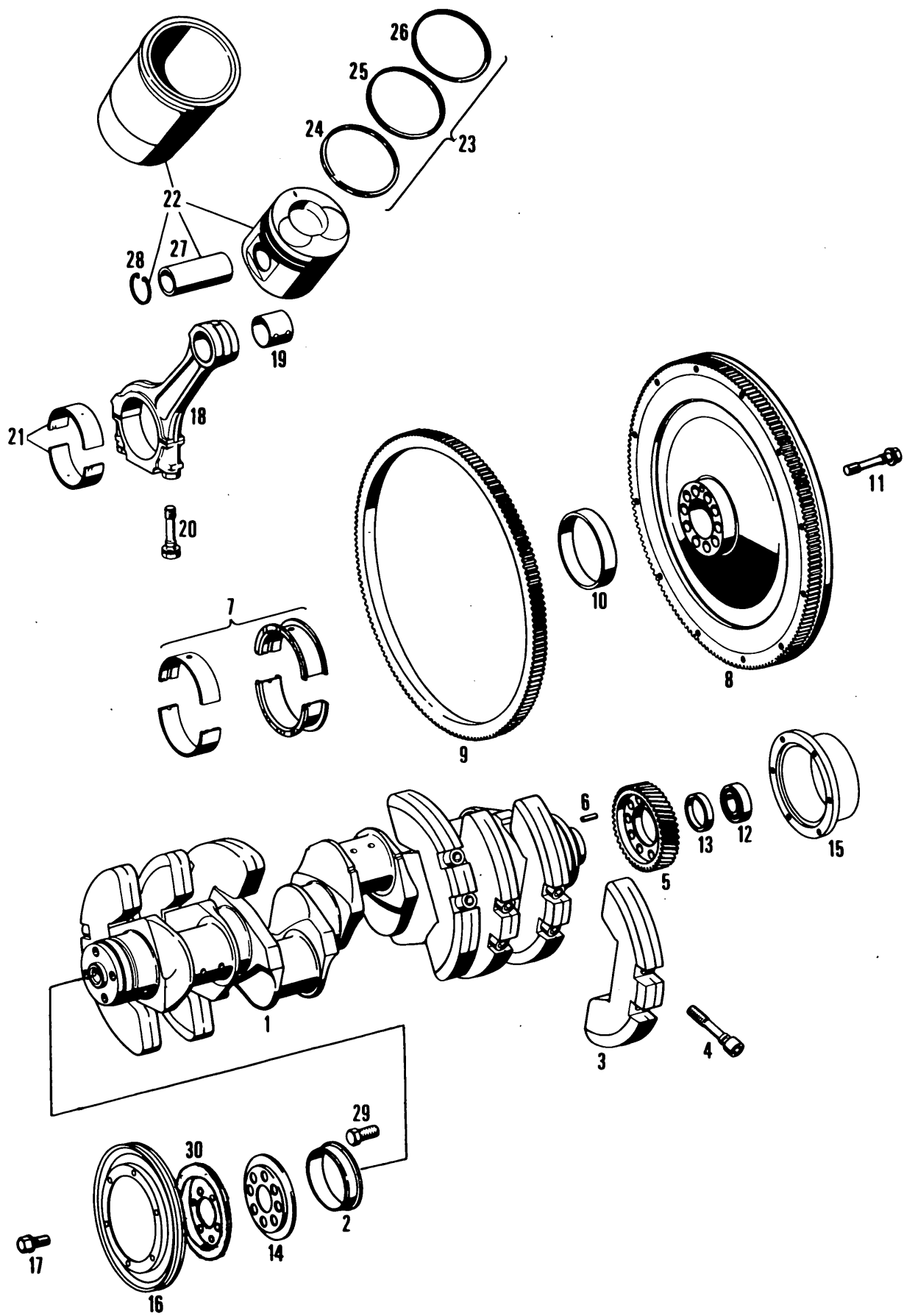
**CYLINDER HEAD AND COVER  
CULASSE ET COUVERCLE  
ZYLINDERKOPF UND HAUBE  
TESTATA CILINDRI  
CILINDERKOP EN DEKSEL**

Fig.	Mercedes Part No	Clayson Part No	Qty	Description	Remarks
1	403 010 40 20		8	Cylinder head	
2	403 997 07 20		8	Expansion plug	
3	326 997 10 20		8	Expansion plug	
4	007603 022103		8	Seal ring	
5	000908 022001		8	Screw plug	
6	007603 014103		AR	Seal ring	
7	000908 014001		AR	Screw plug	
8	403 053 00 30		16	Valve guide	Normal 18 mm
	403 053 01 30		16	Valve guide	Normal I 18,2 mm
	403 053 02 30		16	Valve guide	Repair size 18,4 mm
9	403 053 03 31		8	Valve seat ring	Intake normal 61,11 mm
	403 053 09 31		8	Valve seat ring	Up to Eng. 088408
	403 053 04 31		8	Valve seat ring	Intake normal 60,11 mm
	403 053 10 31		8	Valve seat ring	From Eng. 088409
	403 053 05 31		8	Valve seat ring	Intake normal I 61,31 mm
	403 053 11 31		8	Valve seat ring	Up to Eng. 088408
10	403 053 00 32		8	Valve seat ring	Intake normal I 60,31 mm
	403 053 01 32		8	Valve seat ring	From Eng. 088409
	403 053 02 32		8	Valve seat ring	Intake normal I 61,51 mm
11	403 586 50 90		8	Gasket kit	Up to Eng. 088408
12	403 990 00 01		16	Screw	Intake normal I 60,51 mm
	403 990 07 01		16	Screw	From Eng. 088409
13	403 990 01 01		24	Screw	Exhaust normal 53,11 mm
	403 990 06 01		24	Screw	From Eng. 088409
14	403 990 02 01		8	Screw	Exhaust normal I 53,31 mm
	403 990 05 01		8	Screw	Exhaust repair size 53,51 mm
15	403 016 11 20		8	Gasket	
16	403 016 05 05		7	Cover	Up to Eng. 129660
	403 016 00 05		7	Cover	From Eng. 129661
17	403 016 08 05		1	Cover	Up to Eng. 129660
18	000 018 07 02		1	Cover	From Eng. 129661
19	352 018 01 80		1	Gasket	Up to Eng. 129660
	000 018 01 80		1	Gasket	From Eng. 129661
20	403 016 01 21		8	Gasket	Up to Eng. 129660
	403 016 03 21		8	Gasket	From Eng. 129661
21	000137 008204		AR	Lockwasher	
22	000931 008173		16	Screw	
23	001 017 17 21		8	Nozzle holder	
24	001 017 16 21		8	Nozzle holder	
25	000 017 36 52		AR	Shim 1,00 mm	
	000 017 37 52		AR	Shim 1,05 mm	
	000 017 38 52		AR	Shim 1,10 mm	
	000 017 39 52		AR	Shim 1,15 mm	
	000 017 40 52		AR	Shim 1,20 mm	
	000 017 41 52		AR	Shim 1,25 mm	



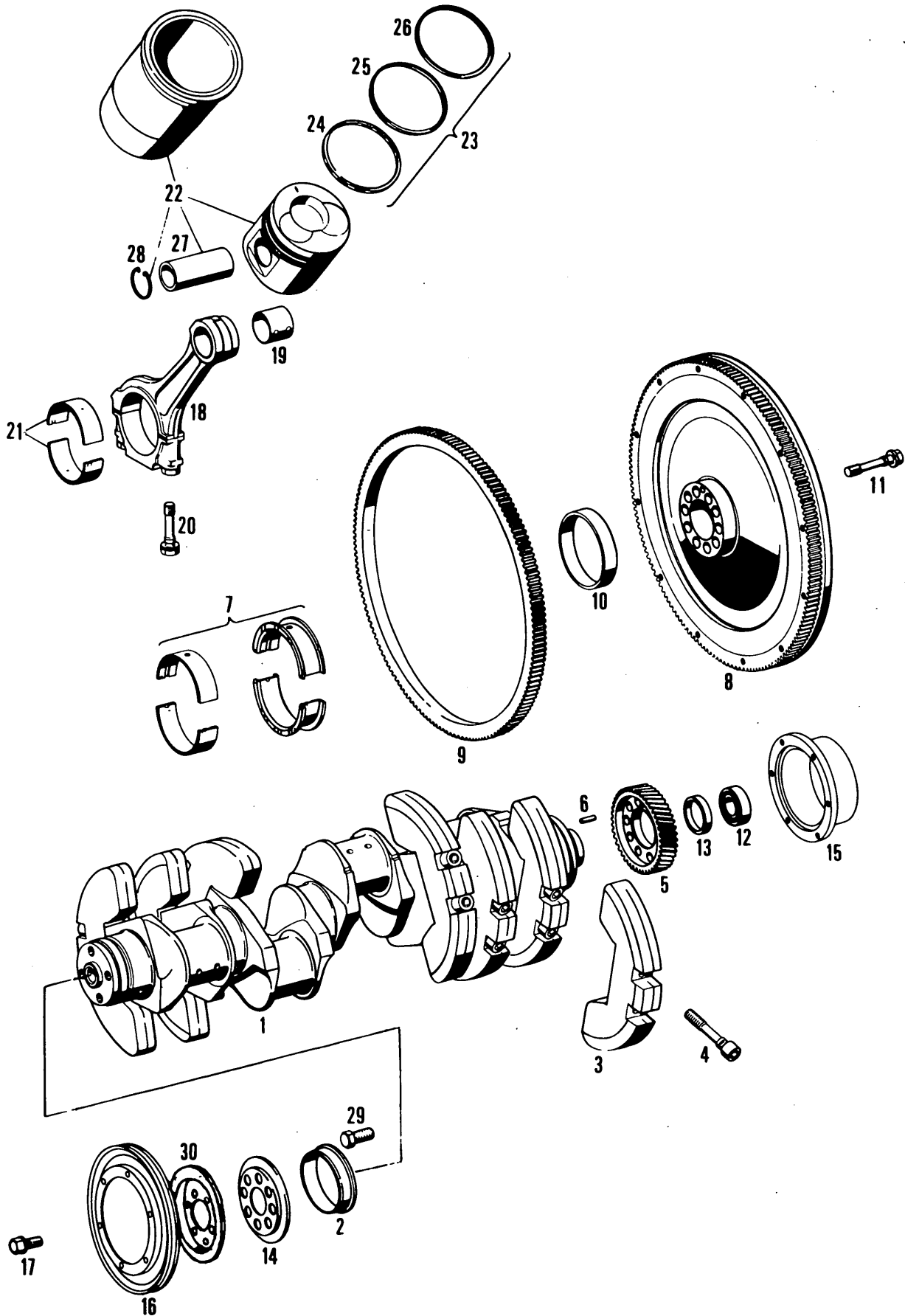
**CYLINDER HEAD AND COVER**  
**CULASSE ET COUVERCLE**  
**ZYLINDERKOPF UND HAUBE**  
**TESTATA CILINDRI**  
**CILINDERKOP EN DEKSEL**

Fig.	Mercedes Part No	Clayson Part No	Qty	Description	Remarks
25	000 017 42 52		AR	Shim 1,30 mm	
	000 017 43 52		AR	Shim 1,35 mm	
	000 017 44 52		AR	Shim 1,40 mm	
	000 017 45 52		AR	Shim 1,45 mm	
	000 017 46 52		AR	Shim 1,50 mm	
	000 017 47 52		AR	Shim 1,55 mm	
	000 017 48 52		AR	Shim 1,60 mm	
	000 017 49 52		AR	Shim 1,65 mm	
	000 017 50 52		AR	Shim 1,70 mm	
	000 017 51 52		AR	Shim 1,75 mm	
	000 017 52 52		AR	Shim 1,80 mm	
	000 017 53 52		AR	Shim 1,85 mm	
	000 017 54 52		AR	Shim 1,90 mm	
	000 017 55 52		AR	Shim 1,95 mm	
26	000 017 05 17		8	Spring	
27	000 017 89 52		8	Spacer	
28	000 017 11 74		8	Thrust pin	
29	000 017 22 16		8	Nut	
30	000 017 60 12		8	Nozzle	
31	346 017 01 60		8	Seal ring	
32	403 017 02 71		8	Screw	
	402 586 52 90		1	Gasket kit	



CRANKSHAFT  
VILE BREQUIN  
KURBELWELLE  
ALBERO MOTORE  
KRUKAS

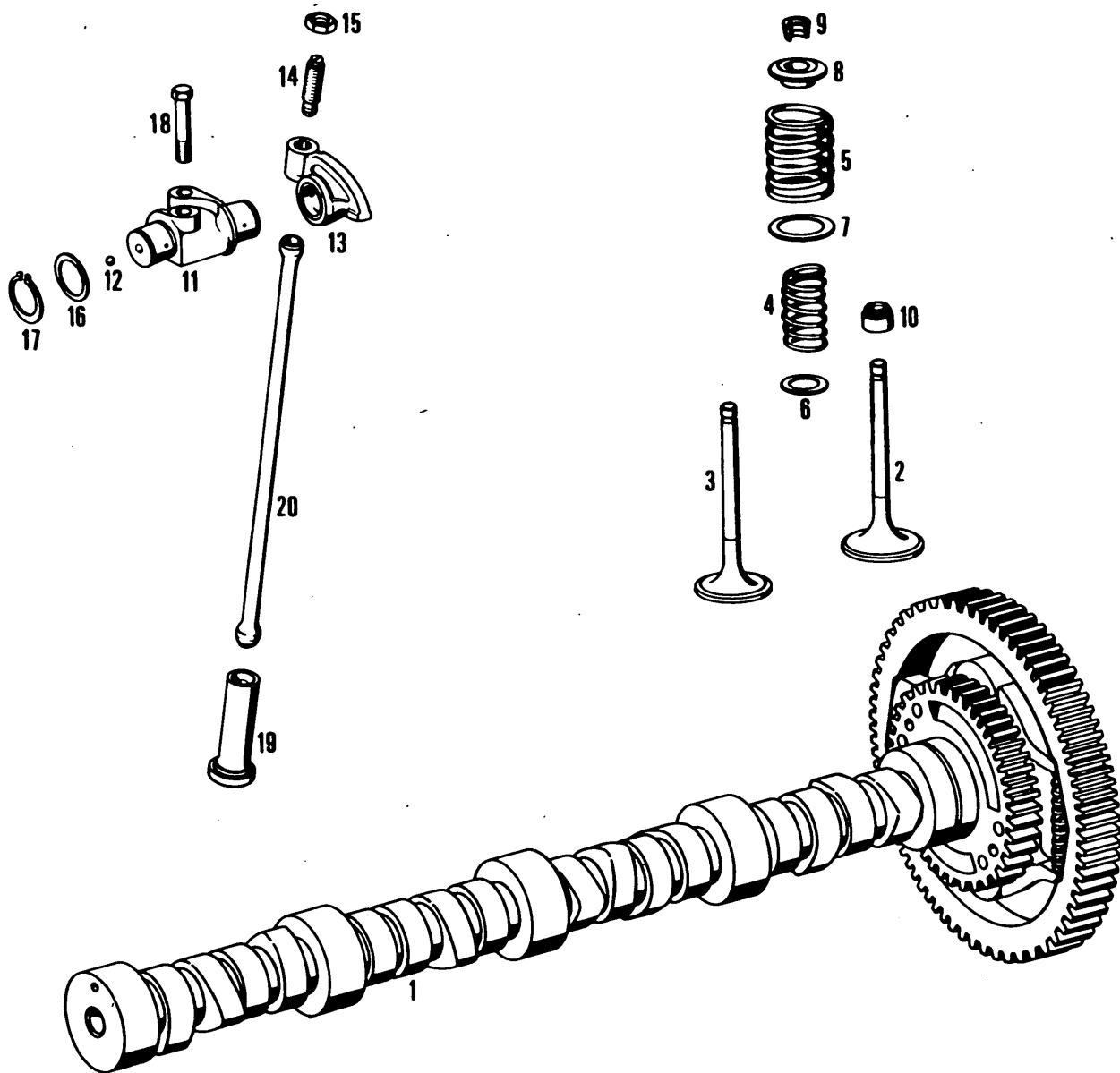
Fig.	Mercedes Part No	Clayson Part No	Qty	Description	Remarks
1			1	Crankshaft	
2	403 031 06 27		1	Sleeve	Up to Eng. 144267
	403 031 07 27		1	Sleeve	From Eng. 144268
3	403 031 00 07		6	Counter weight	
4	403 031 01 71		12	Screw	
5	403 050 03 03		1	Gear	
6	000007 008217		1	Dowel pin	
7	402 586 50 03		1	Set bearing shells	Ø104 mm – 37,81 mm standard
	402 586 51 03		1	Set bearing	Ø103,90 mm – 37,81 mm normal I
	402 586 52 03		1	Set bearing shells	Ø103,75 mm – 38,31 mm repair size I
	402 586 53 03		1	Set bearing shells	Ø103,50 mm – 38,51 mm repair size II
	402 586 54 03		1	Set bearing shells	Ø103 mm – 38,31 mm repair size III
8	401 030 11 05		1	Flywheel	
9	403 032 03 05		1	Ring gear	
10	403 032 03 09		1	Bushing	
11	403 032 01 71		10	Screw	
12	002 981 15 25		1	Ball bearing	
13	403 032 01 51		1	Spacer	
14	403 031 00 32		1	Cover plate	Up to Eng. 050993
	403 031 02 32		1	Cover plate	From Eng. 050994 to Eng. 144267
	403 031 03 32		1	Cover plate	From Eng. 144268
15	402 035 00 13		1	Hub	
16	401 202 00 10		1	V-pulley	
17	000993 008153		6	Screw	
18	403 030 11 20		8	Connecting rod	Up to Eng. 040229
	403 030 17 20		8	Connecting rod	From Eng. 040300
19	403 038 02 50		8	Bushing	Up to Eng. 070546
	403 038 04 50		8	Bushing	From Eng. 070547
20	403 038 02 71		16	Screw	
21	402 586 60 03		1	Bearing	Repair size normal 90,00 mm
	402 586 61 03		1	Bearing	Repair size normal 89,90 mm
	402 586 62 03		1	Bearing	Repair size I 89,75 mm
	402 586 63 03		1	Bearing	Repair size II 89,50 mm
	402 586 64 03		1	Bearing	Repair size III 89,00 mm
22	403 030 16 37		8	Piston and liner	With the fit C – C
	403 011 24 10		8	Liner	124,990 mm, B NS
	403 011 25 10		8	Liner	124,995 mm, C
	403 011 26 10		8	Liner	125,000 mm, D NS
	403 011 27 10		8	Liner	125,005 mm, E NS
	403 030 30 17		8	Piston	124,860 mm, B NS
	403 030 49 17		8	Piston	124,865 mm, C
	403 030 32 17		8	Piston	124,870 mm, D NS
	403 030 33 17		8	Piston	125,875 mm, E NS



CRANKSHAFT  
 VILE BREQUIN  
 KURBELWELLE  
 ALBERO MOTORE  
 KRUKAS

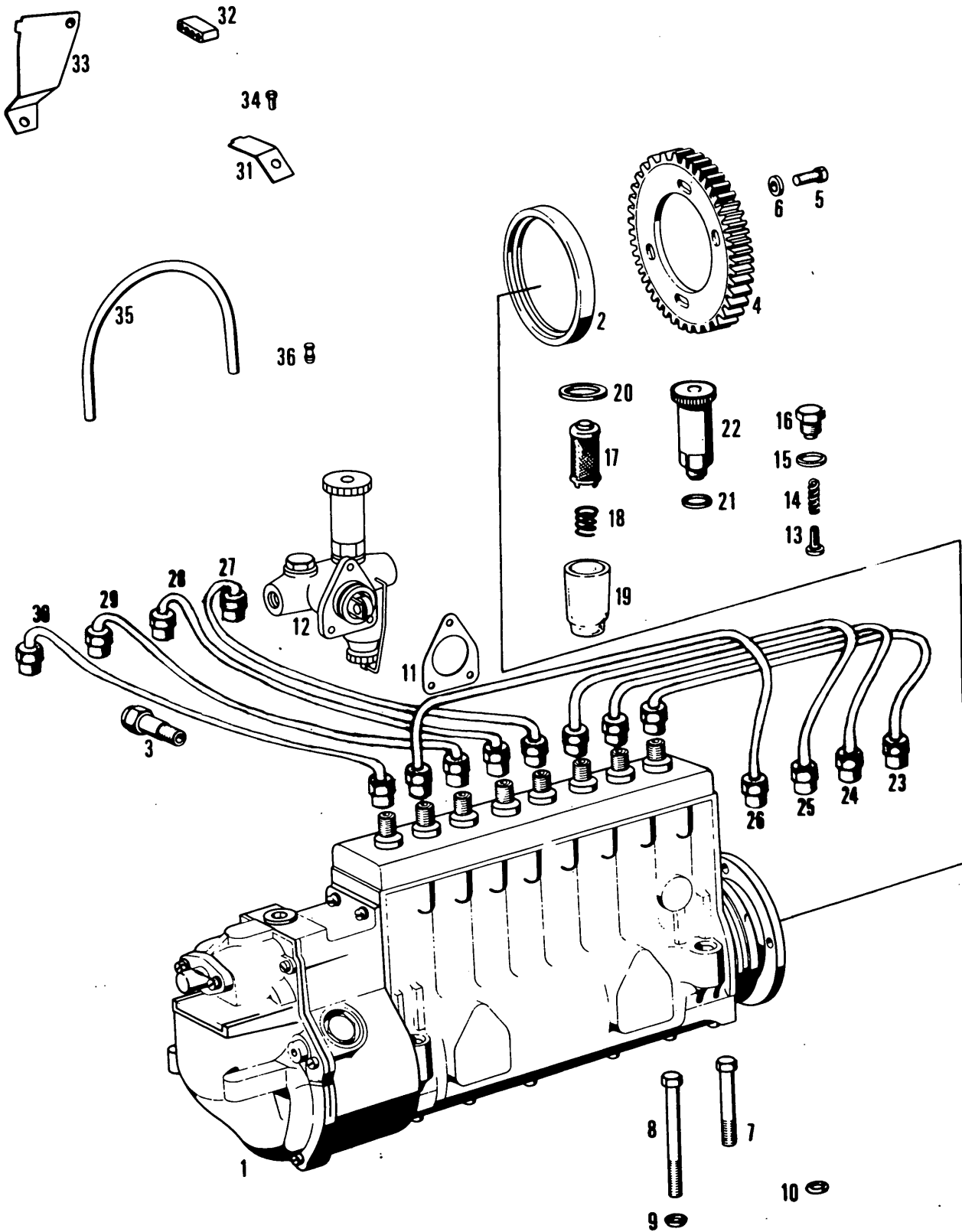
Fig.	Mercedes Part No	Clayson Part No	Qty	Description	Remarks
23	004 586 56 03		8	Ring set	With hose spring
24	403 037 10 16		8	Piston ring No 1	
25	001 037 57 17		8	Piston ring No 2	
26	007 037 14 18		8	Piston ring No 3	
27	403 037 02 20		8	Piston pin	
28	403 994 00 34		12	Snap ring	
	403 011 02 84		AR	Shim	
29	403 990 02 04		8	Screw	
30	403 035 01 14		1	Spacer	





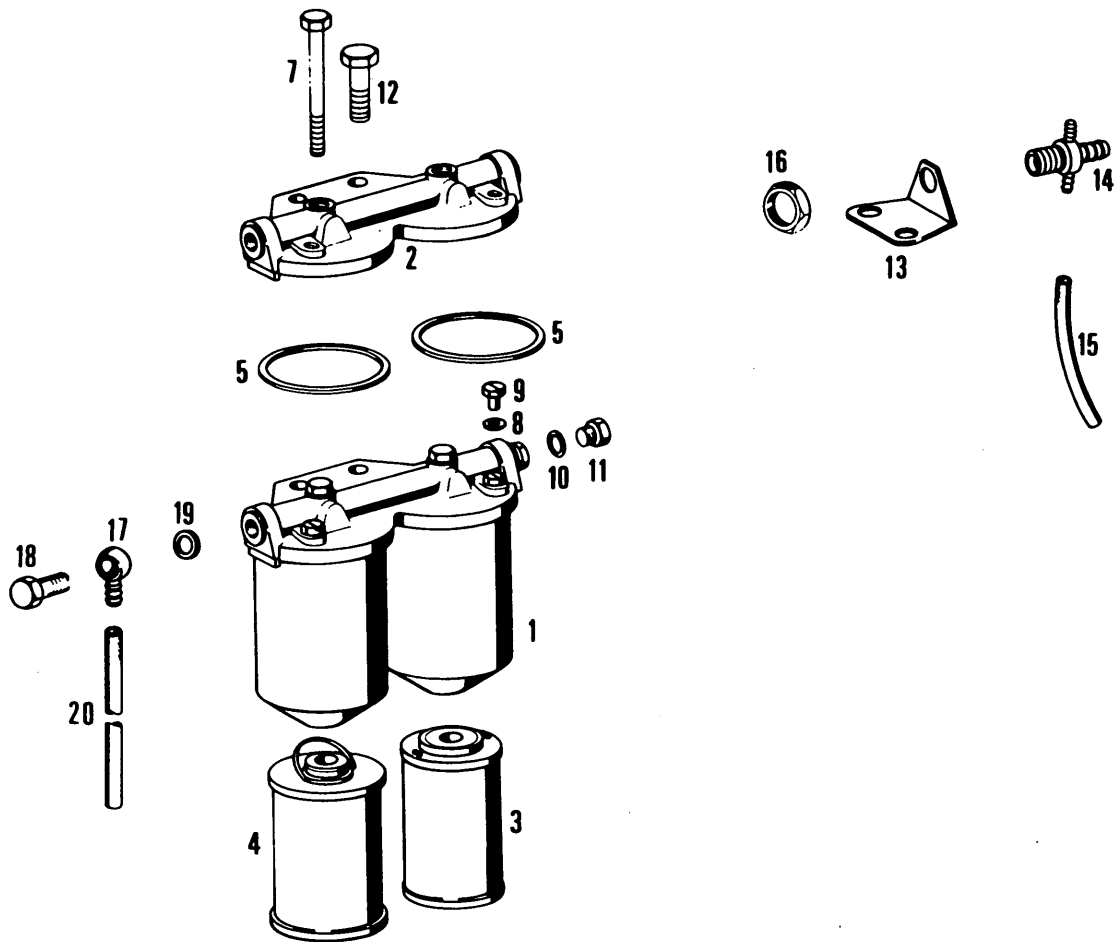
TIMING  
DISTRIBUTION  
STEUERUNG  
DISTRIBUZIONE  
DISTRIBUTIE

Fig.	Mercedes Part No	Clayson Part No	Qty	Description	Remarks
1	402 050 18 01		1	Camshaft	From Eng. 079059 Up to Eng. 079058
	402 050 13 01		1	Camshaft	
2	403 053 09 01		8	Inlet valve	
3	403 050 10 27		8	Exhaust valve	
4	403 053 06 22		16	Spring	
5	403 053 01 20		16	Spring	
6	403 053 00 52		16	Washer	
7	403 053 01 52		16	Washer	
8	403 053 03 25		16	Retainer	
9	000 053 04 26		32	Valve cone shaft	
10	403 053 00 96		16	Sleeve	
11	403 050 09 36		8	Support rocket arm	
12	005401 999012		16	Ball	
13	403 050 07 33		16	Rocker arm	
14	403 055 02 20		16	Screw	
15	312 990 02 51		16	Nut	
16	001 990 82 40		16	Washer	
17	000471 025000		16	Snap ring	
18	000931 010369		16	Bolt	
19	403 054 18 01		16	Valve tappet	Normal 20 mm Normal I 20,25 mm Repair size 20,50 mm
	403 054 19 01		16	Valve tappet	
	403 054 20 01		16	Valve tappet	
20	403 054 04 05		16	Push rod	



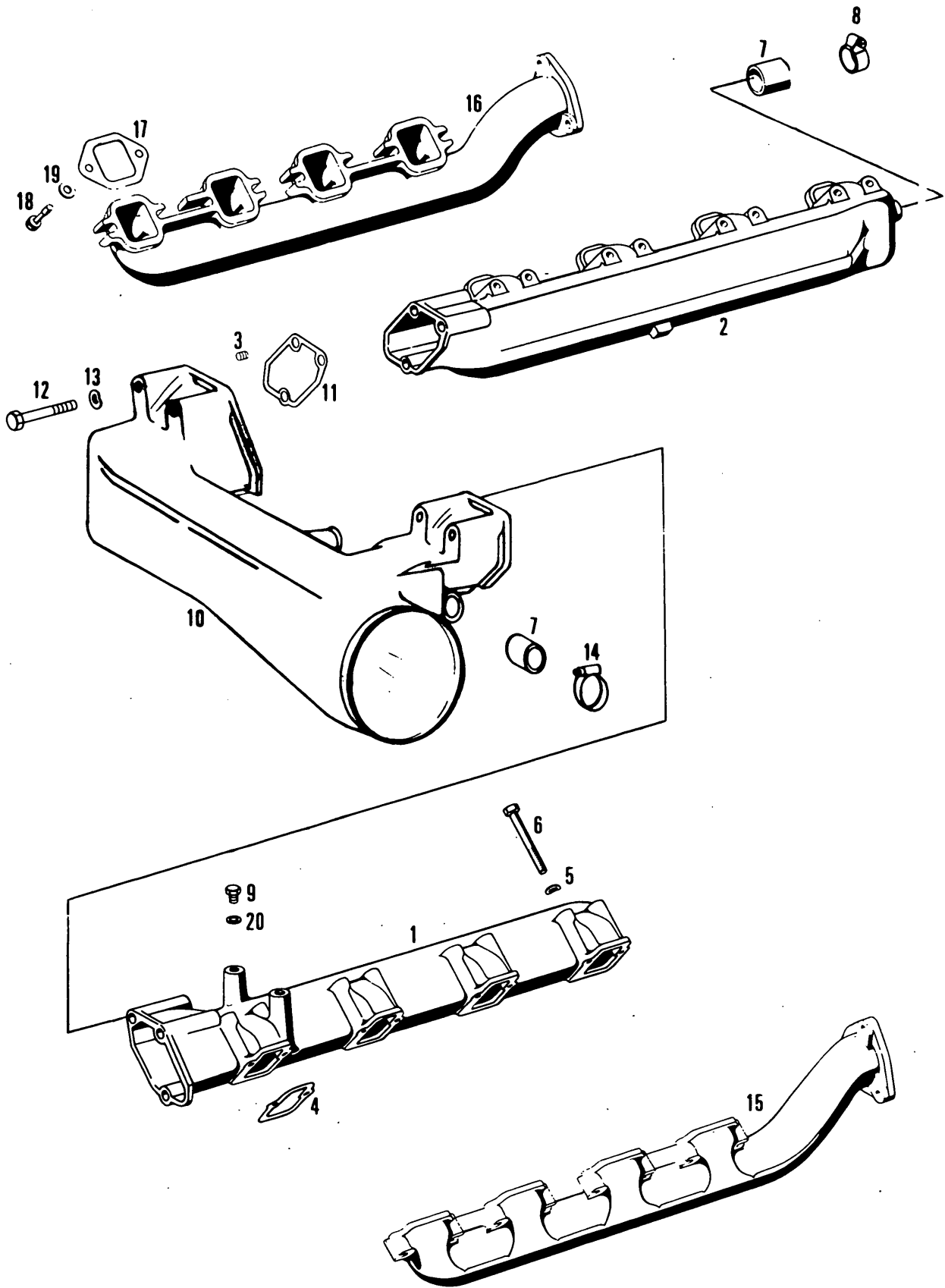
INJECTION PUMP  
POMPE D'INJECTION  
EINSPRITZPUMPE  
POMPA D'INIEZIONE  
INJECTIEPOMP

Fig.	Mercedes Part No	Clayson Part No	Qty.	Description	Remarks	
1	006 074 40 02		1	Injection	Bosch ref. PE 8P 100A320 LS 810	
2	403 074 00 59		1	Seal		
3	000 074 38 84		1	Valve		
4	403 077 03 12		1	Gear		
5	000933 008030		4	Screw		
6	403 990 05 40		4	Rondelle		
7	000931 010117		3	Screw		
8	000931 010147		1	Screw		
9	006319 010303		4	Washer		
10	008 997 61 45		1	Seal		
11	000 091 12 80		1	Gasket		
12	001 091 84 01		1	Fuel feed pump		
13	000 091 09 10		1	Valve		
14	000 091 03 19		1	Valve spring		
15	007603 018104		1	Seal ring		
16	000 997 07 30		1	Screw plug		
17	000 091 00 39		1	Strainer		
18	000 993 00 05		1	Ressort		
19	000 091 00 40		1	Filter housing		
20	000 997 00 40		1	Seal ring		
21	007603 018104		1	Seal ring		
22	001 091 45 01		1	Hand pump		
23	403 070 76 33		1	Delivery line L.H. No 1		
24	403 070 77 33		1	Delivery line L.H. No 2		
25	403 070 78 33		1	Delivery line L.H. No 3		
26	403 070 74 33		1	Delivery line L.H. No 4		
27	403 070 25 33		1	Delivery line R.H. No 1		
28	403 070 26 33		1	Delivery line R.H. No 2		
29	403 070 27 33		1	Delivery line R.H. No 3		
30	403 070 28 33		1	Delivery line R.H. No 4		
31	403 070 13 66		1	Clamping piece		
32	403 078 06 86		2	Cale		
33	403 070 00 66		1	Clamping piece		
34	000933 006103		AR	Screw		
35	615 476 03 26			Leak line		Order by meter
36	403 078 00 74		2	Bolt		



FUEL FILTER  
 FILTRE A CARBURANT  
 KRAFTSTOFFFILTER  
 FILTRO CARBURANTE  
 BRANDSTOFFFILTER

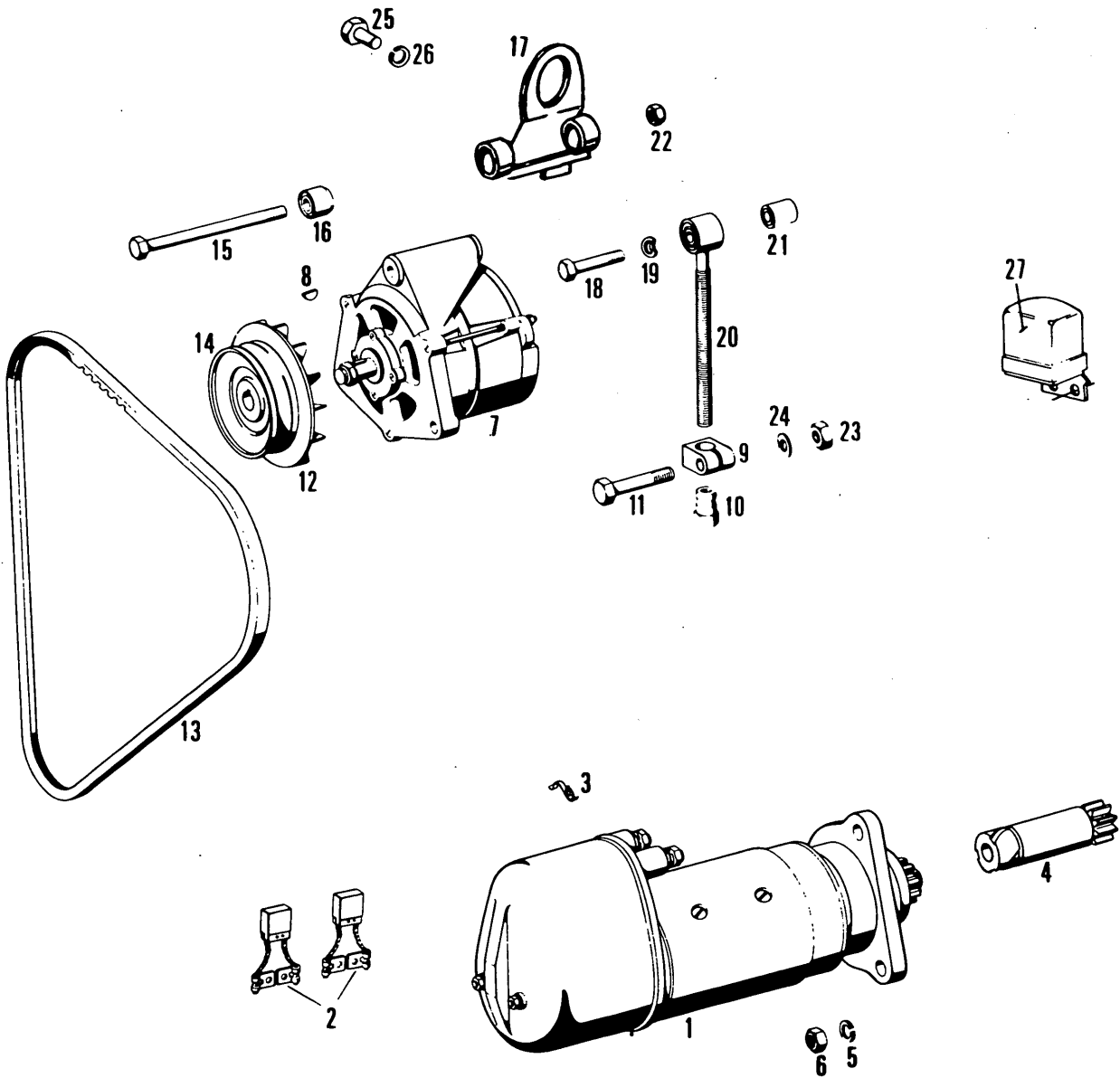
Fig.	Mercedes Part No	Clayson Part No	Qty.	Description	Remarks
1	001 477 58 01		1	Fuel filter compl. Hengst	
	001 477 57 01		1	Fuel filter compl. Knecht	
2	000 477 34 08		1	Cover - Hengst	
	000 477 33 08		1	Cover - Knecht	
3	000 477 57 15	392703	1	Filter element (Feutre)	
4	000 447 47 15	398067	1	Filter element (Micro)	
5	000 447 35 80	398069	2	Seal ring	
6	007603 008109		2	Seal ring	
7	000931 008125		2	Screw	
8	007603 006101		2	Seal ring	
9	000 477 30 72		2	Screw plug	
10	007603 014102		1	Seal ring	
11	000908 014001		1	Screw plug	
12	000961 012064		2	Screw	
13	403 078 11 41		1	Support	
14	403 070 00 95		1	Intermediate piece	
15	615 476 03 26		2	Pipe 410 mm	Order by meter
16	080705 016003		1	Nut	
17	000 990 40 88		5	Raccord	
18	915011 008103		AR	Hollow screw	
19	007603 014104		AR	Seal ring	
20	008 997 54 82		1	Pipe 150 mm	Order by meter
			1	Pipe 155 mm	Order by meter
			1	Pipe 370 mm	Order by meter



**MANIFOLDS**  
**COLLECTEURS**  
**SOUGROHR – AUSPUFFROHR**  
**COLLETTORE**  
**UIT- & INLAAT**

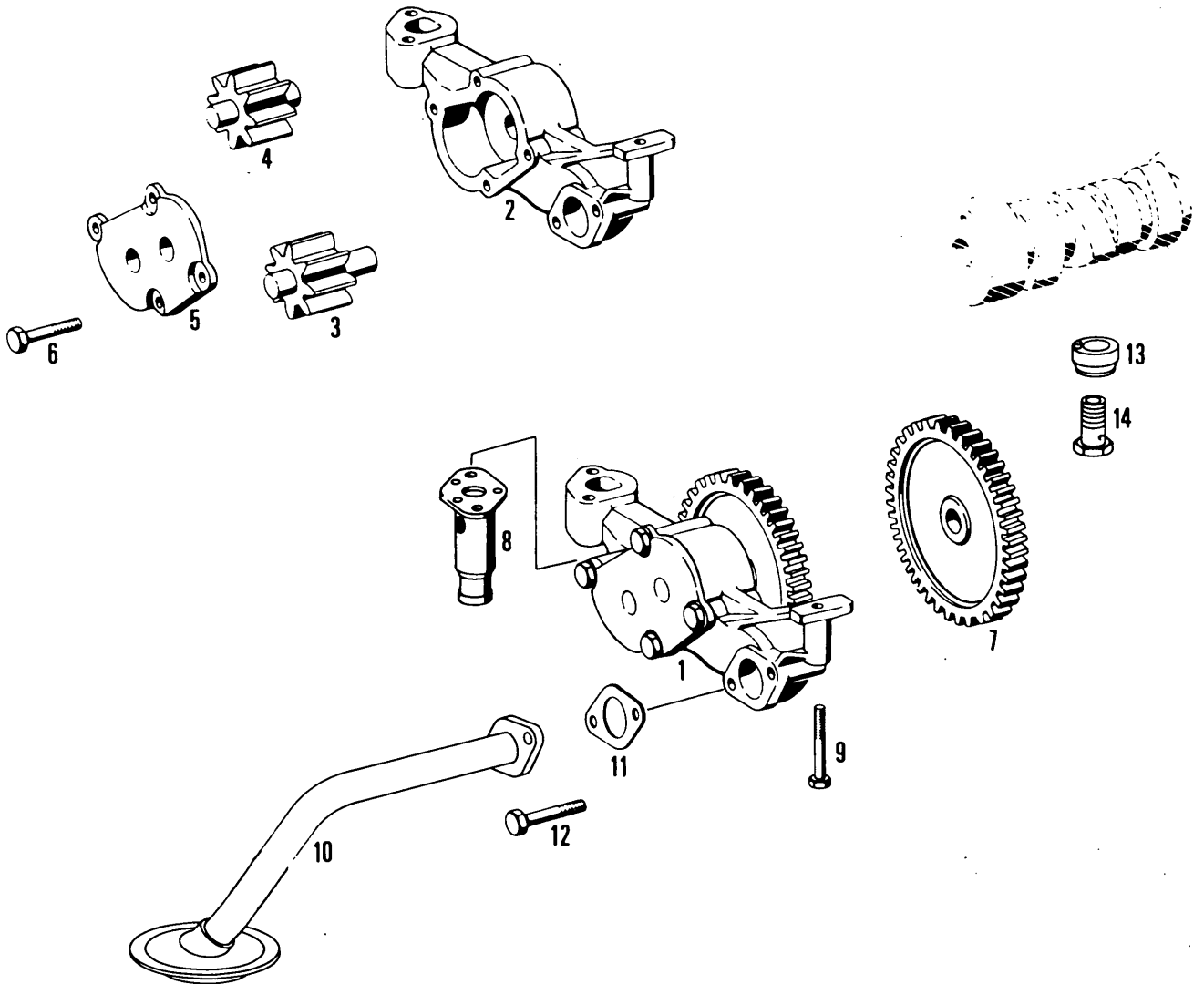
Fig.	Mercedes Part No	Clayson Part No	Qty.	Description	Remarks
1	402 140 04 01		1	Inlet manifold-left	
2	402 140 05 01		1	Inlet manifold-right	
3	900421 010002		6	Screw plug	
4	403 141 10 80		8	Joint	
5	000137 008204		16	Lockwasher	
6	000931 008207		12	Screw	
	000931 008220		4	Screw	
7	000 987 15 45		2	Cap	
8	916017 020000		1	Clamp	
9	916017 010102		2	Screw plug	
10	403 140 17 01		1	Inlet manifold	
11	401 141 00 80		2	Gasket	
12	000931 010126		6	Screw	
13	000137 010201		6	Lockwasher	
14	916018 032000		1	Clamp	
15	402 142 27 01		1	Exhaust manifold-left	
16	402 142 51 01		1	Exhaust manifold-right	
17	403 142 03 80		8	Gasket	
18	403 990 02 19		16	Screw	
19	403 142 02 12		16	Clamping piece	
20	007603 010100		AR	Seal ring	





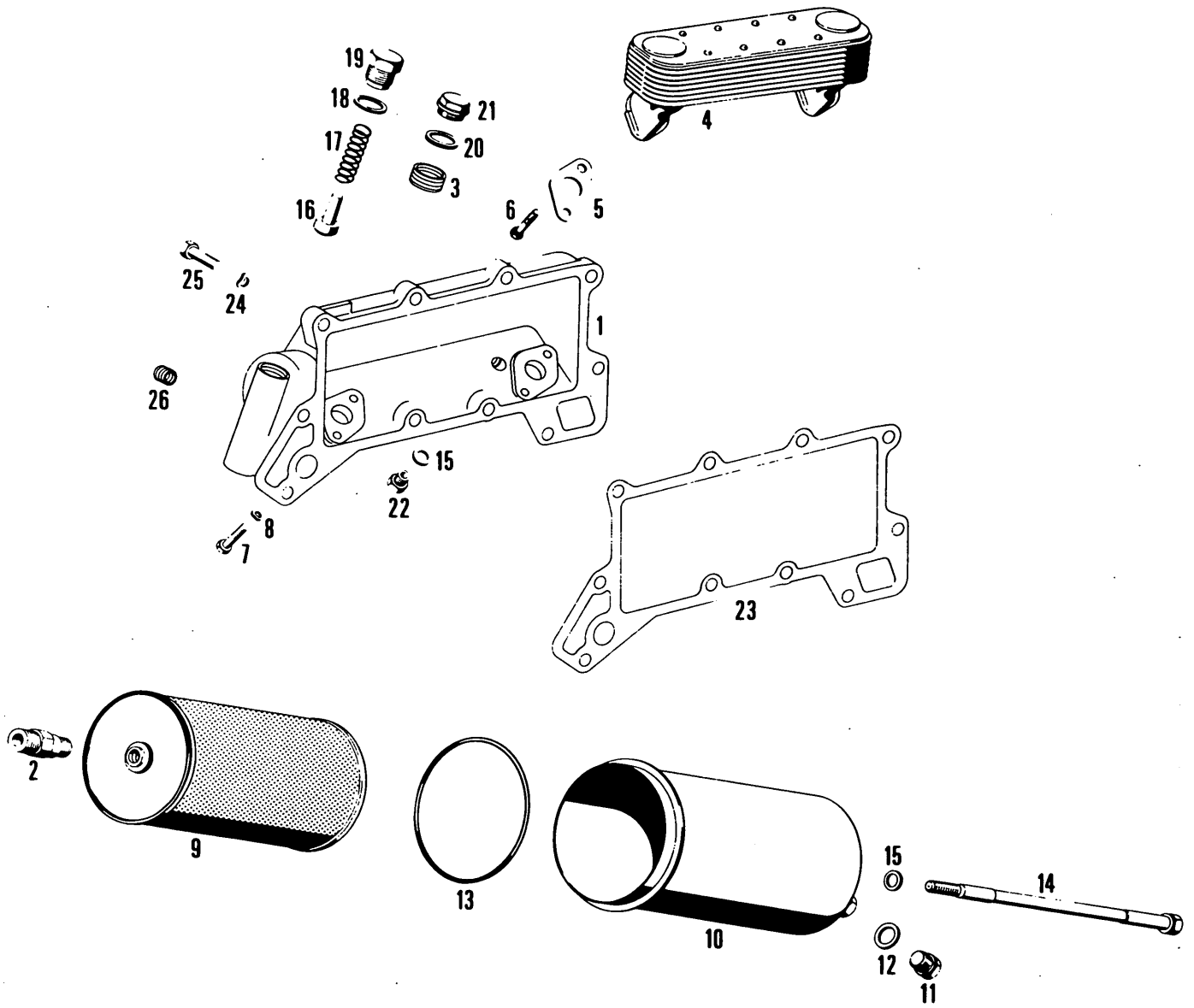
STARTING MOTOR – ALTERNATOR  
 DEMARREUR – ALTERNATEUR  
 ANLASSER – LICHTMASCHINE  
 MOTORINO D'AVVIAMENTO – ALTERNATORE  
 STARTER – ALTERNATOR

Fig.	Mercedes Part No	Clayson Part No	Qty	Description	Remarks
1	001 151 97 01		1	Starter	
2	000 151 51 14		1	Carbon brushes	
3	000 151 08 93		4	Spring	
4	000 151 60 13		1	Pinion	
5	000127 012202		3	Lockwasher	
6	000934 012022		3	Nut	
7		392363	1	Alternator	Bosch ref. 0 120 400 798 up to 4106
		422746	1	Alternator 65A25ACR	Lucas from 4106
8		170003	1	Woodruff key	
		080496	1	Woodruff key	
9	314 155 02 28	396159	1	Clamping piece	
10	352 155 01 72	396160	1	Tension nut	
11	314 155 02 71	396161	1	Hex. cap screw	
12		331178	1	Fan	
		422769	1	Fan	
13		393519	1	V-belt	
14		393859	1	V-pulley	
		422772	1	V-pulley	
15		120065	1	Screw	
16		392385	2	Bushing	
17		393858	1	Support	incl.fig.16
18		120201	1	Screw	
19		140045	1	Lockwasher	
20		392406	1	Idler screw	incl.fig.21
21		395826	1	Bushing	
22		100067	1	Hex. lock nut	
23		100015	1	Nut	
24		322358	1	Lockwasher	
25	000933 020008		1	Bolt	
	000933 010034		2	Bolt	
26	000127 020202		1	Lockwasher	
	000127 010203		2	Lockwasher	
27		331470	1	Regulator	Bosch ref. 0 190 601 006



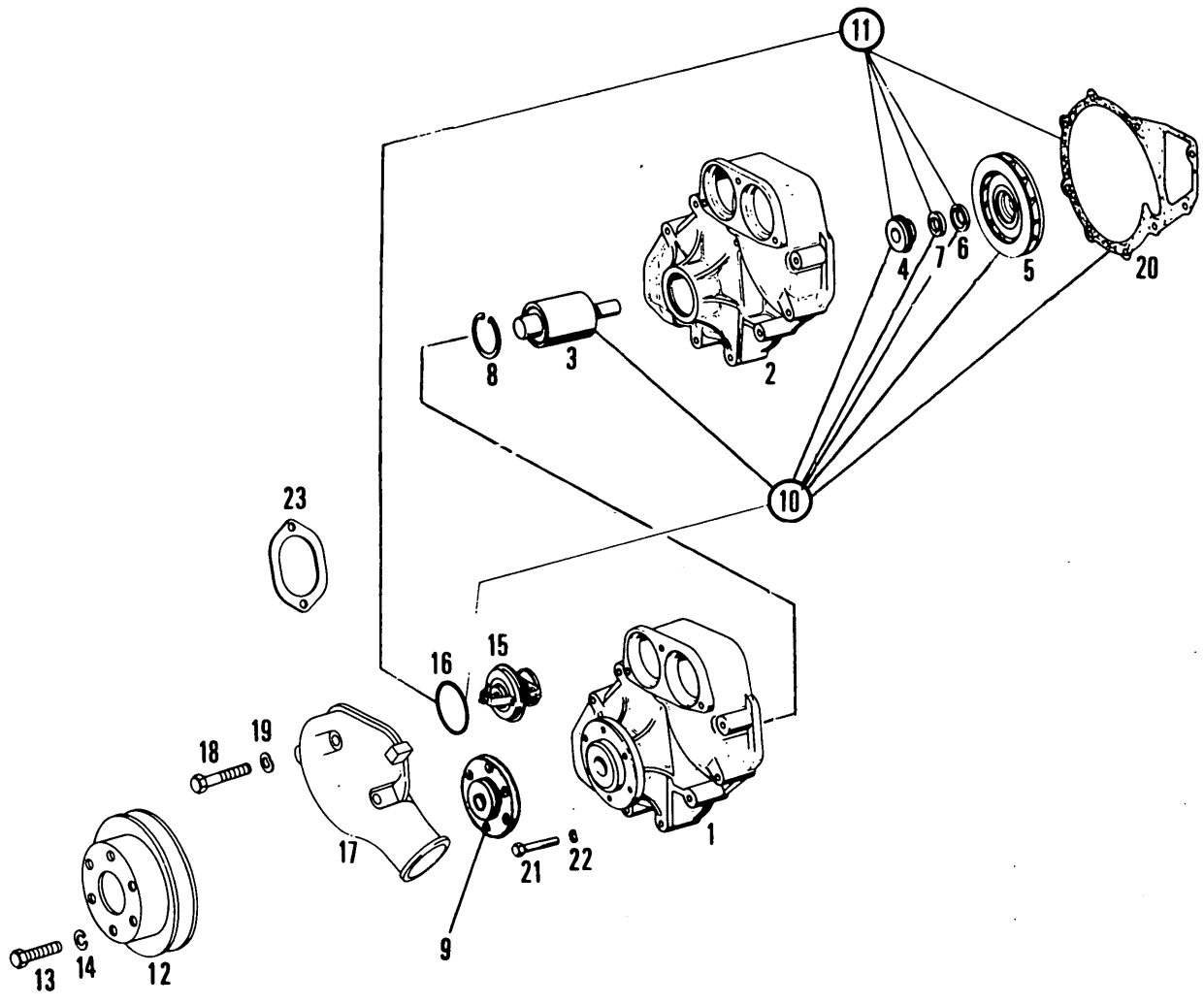
OILPUMP  
 POMPE A HUILE  
 ÖLPUMPE  
 POMPA OLIO  
 OLIEPOMP

Fig.	Mercedes Part No	Clayson Part No	Qty	Description	Remarks
1	401 180 02 01		1	Oil pump	From Eng. 001923 - 121799 From Eng. 121800 NS
	403 180 17 01		1	Oil pump	
2	401 181 01 01		1	Housing	
3	401 180 07 04		1	Pinion	
4	401 180 06 04		1	Pinion	
5	401 181 02 20		1	Cover	
6	000931 008314		4	Bolt	
7	403 181 01 12		1	Gear	
8	403 180 12 15		1	Valve	
9	000912 008031		3	Bolt	
10	402 180 10 52		1	Pipe	
11	071511 036016		1	Gasket	
12	000931 008086		2	Bolt	
13	403 187 11 36		8	Oil nozzle	
14	403 187 05 75		8	Screw	



OILFILTER  
 FILTER A HUILE  
 ÖLFILTRE  
 FILTRO OLIO  
 OLIEFILTER

Fig.	Mercedes Part No	Clayson Part No	Qty	Description	Remarks
1	403 180 14 38		1	Cover	Up to Eng. 129660
	403 180 24 38		1	Cover	From Eng. 129661
2	403 184 02 68		1	Adaptor	NS
3	900421 026000		1	Screw plug	
4	001 188 12 01		1	Oil cooler	Up to Eng. 129660
	001 188 30 01		1	Oil cooler	From Eng. 129661
5	917003 026000		2	Gasket	
6	000933 008147		2	Screw	
7	000931 008053		2	Screw	
8	000137 008204		4	Lockwasher	
9	401 184 00 25	419405	1	Filter element	
10	401 180 00 11		1	Filter bowl	
11	346 997 01 30		1	Screw plug	
12	007603 018101		1	Seal ring	
13	008 997 70 45	398066	1	Seal ring	
14	401 990 00 01		1	Screw	Up to Eng. 129660
	401 990 50 01		1	Screw	From Eng. 129661
15	007603 014103		2	Seal ring	
16	403 184 00 32		1	Valve	
17	403 993 02 01		1	Spring	
18	007603 026105		1	Seal ring	
19	403 184 01 56		1	Screw plug	
20	007603 026111		1	Seal ring	
21	403 997 00 32		1	Screw plug	
22	007604 014106		1	Screw plug	
23	403 184 01 80		1	Gasket	Up to Eng. 129660
	403 184 02 80		1	Gasket	From Eng. 129661
24	000137 010201		10	Lockwasher	
25	000931 010056		9	Screw	
	000931 010178		1	Screw	
26	900195 014205		1	Screw plug	



**WATERPUMP**  
**POMPE A EAU**  
**WASSERPUMPE**  
**POMPA AGUA**  
**WATERPOMP**

Fig.	Mercedes Part No	Clayson Part No	Qty	Description	Remarks
1	403 200 35 01		1	Waterpump	Up to Eng. 129660
	403 200 44 01		1	Waterpump	From Eng. 129661
2	403 201 09 01		1	Housing	Up to Eng. 129660 NS
	403 201 12 01		1	Housing	From Eng. 129661 NS
3	403 200 04 02		1	Shaft	Up to Eng. 129660
	403 200 09 02		1	Shaft	From Eng. 129661
4	000 201 36 19		1	Seal	
5	403 201 09 07		1	Impeller	
6	000 201 01 97		1	Sealing collar	
7	000 201 04 63		1	Pressure ring	
8	000472 055000		1	Snap ring	
9	403 202 04 14		1	Hub	
10	403 586 52 20		1	Repair kit	Up to Eng. 129660
	403 586 56 20		1	Repair kit	From Eng. 129661
11	403 586 00 20		1	Repair kit	Up to Eng. 129660
	403 586 55 20		1	Repair kit	From Eng. 129661
12	403 202 06 10		1	V-pulley	
13	000933 008106		6	Screw	
14	000137 008204		6	Lockwasher	
15	003 203 28 75		2	Thermostat 83°	
16	003 997 57 48		2	Seal	
17	403 201 08 31		1	Cover	
18	000931 008248		3	Screw	
19	000137 008204		3	Lockwasher	
20	403 201 03 80		1	Gasket	
21	000931 008091		9	Screw	
22	000137 008202		AR	Lockwasher	
23	403 201 04 80	398131	1	Seal	



INDEX

Mercedes No.	Clayson No.	Page	Fig.	Mercedes No.	Clayson No.	Page	Fig.
000 017 05 17		11-B8	26	000 997 53 48		5-B2	35
000 017 11 74		11-B8	28	001 017 16 21		9-B6	24
000 017 22 16		11-B8	29	001 017 17 21		9-B6	23
000 017 36 52		9-B6	25	001 037 57 17		15-B12	25
000 017 37 52		9-B6	25	001 091 45 01		19-B16	22
000 017 38 52		9-B6	25	001 091 84 01		19-B16	12
000 017 39 52		9-B6	25	001 151 97 01		25-B22	1
000 017 40 52		9-B6	25	001 188 12 01		29-B26	4
000 017 41 52		9-B6	25	001 188 30 01		29-B26	4
000 017 42 52		11-B8	25	001 477 57 01		21-B18	1
000 017 43 52		11-B8	25	001 477 58 01		21-B18	1
000 017 44 52		11-B8	25	001 981 07 85		5-B2	31
000 017 45 52		11-B8	25	001 989 29 20		5-B2	43
000 017 46 52		11-B8	25	001 990 82 40		17-B14	16
000 017 47 52		11-B8	25	002 981 15 25		13-B10	12
000 017 48 52		11-B8	25	003 203 28 75		31-C2	15
000 017 49 52		11-B8	25	003 997 13 47		5-B2	37
000 017 50 52		11-B8	25	003 997 57 48		31-C2	16
000 017 51 52		11-B8	25	004 586 56 03		15-B12	23
000 017 52 52		11-B8	25	005 997 26 47		7-B4	16
000 017 53 52		11-B8	25	006 074 40 02		19-B16	1
000 017 54 52		11-B8	25	007 037 14 18		15-B12	26
000 017 55 52		11-B8	25	008 997 47 45		5-B2	42
000 017 60 12		11-B8	30	008 997 54 82		21-B18	20
000 017 89 52		11-B8	27	008 997 61 45		19-B16	10
000 018 01 80		9-B6	19	008 997 70 45	398066	29-B26	13
000 018 07 02		9-B6	18	312 990 02 51		17-B14	15
000 053 04 26		17-B14	9	314 155 02 28	396159	25-B22	9
000 074 38 84		19-B16	3	314 155 02 71	396161	25-B22	11
000 091 00 39		19-B16	17	326 997 10 20		9-B6	3
000 091 00 40		19-B16	19	346 017 01 60		11-B8	31
000 091 03 19		19-B16	14	346 997 00 20		5-B2	25
000 091 09 10		19-B16	13	346 997 01 30		29-B26	11
000 091 12 80		19-B16	11	352 018 01 80		9-B6	19
000 151 08 93		25-B22	3	352 155 01 72	396160	25-B22	10
000 151 51 14		25-B22	2	352 997 04 72		7-B4	14
000 151 60 13		25-B22	4	355 203 05 08		5-B2	46
000 201 01 97		31-C2	6	387 501 15 20		7-B4	10
000 201 04 63		31-C2	7	401 010 02 66		7-B4	11
000 201 36 19		31-C2	4	401 010 20 72		7-B4	9
000 447 35 80	398069	21-B18	5	401 030 11 05		13-B10	8
000 447 47 15	398067	21-B18	4	401 032 00 15		5-B2	51
000 477 30 72		21-B18	9	401 141 00 80		23-B20	11
000 477 33 08		21-B18	2	401 180 00 11		29-B26	10
000 477 34 08		21-B18	2	401 180 02 01		27-B24	1
000 477 57 15	392703	21-B18	3	401 180 06 04		27-B24	4
000 987 15 45		23-B20	7	401 180 07 04		27-B24	3
000 990 40 88		21-B18	17	401 181 01 01		27-B24	2
000 991 13 41		5-B2	30	401 181 02 20		27-B24	5
000 993 00 05		19-B16	18	401 184 00 25	419405	29-B26	9
000 997 00 40		19-B16	20	401 202 00 10		13-B10	16
000 997 07 30		19-B16	16	401 990 00 01		29-B26	14
000 997 35 32		5-B2	18				

INDEX

Mercedes No.	Clayson No.	Page	Fig.	Mercedes No.	Clayson No.	Page	Fig.
401 990 50 01		29-B26	14	403 030 32 17		13-B10	22
401 991 01 62		5-B2	3	403 030 33 17		13-B10	22
402 010 18 13		7-B4	1	403 030 49 17		13-B10	22
402 014 02 22		7-B4	6	403 031 00 07		13-B10	3
402 035 00 13		13-B10	15	403 031 00 32		13-B10	14
402 050 13 01		17-B14	1	403 031 01 71		13-B10	4
402 050 18 01		17-B14	1	403 031 02 32		13-B10	14
402 140 04 01		23-B20	1	403 031 03 32		13-B10	14
402 140 05 01		23-B20	2	403 031 06 27		13-B10	2
402 142 27 01		23-B20	15	403 031 07 27		13-B10	2
402 142 51 01		23-B20	16	403 032 01 51		13-B10	13
402 180 10 52		27-B24	10	403 032 01 71		13-B10	11
402 586 50 03		13-B10	7	403 032 03 05		13-B10	9
402 586 51 03		13-B10	7	403 032 03 09		13-B10	10
402 586 52 03		13-B10	7	403 035 01 14		15-B12	30
402 586 52 90		11-B8	32	403 037 02 20		15-B12	27
402 586 53 03		13-B10	7	403 037 10 16		15-B12	24
402 586 54 03		13-B10	7	403 038 02 50		13-B10	19
402 586 60 03		13-B10	21	403 038 02 71		13-B10	20
402 586 61 03		13-B10	21	403 038 04 50		13-B10	19
402 586 62 03		13-B10	21	403 050 03 03		13-B10	5
402 586 63 03		13-B10	21	403 050 07 33		17-B14	13
402 586 64 03		13-B10	21	403 050 09 36		17-B14	11
403 010 00 62		5-B2	34	403 050 10 27		17-B14	3
403 010 05 14		5-B2	36	403 051 04 10		5-B2	8
403 010 08 17		7-B4	32	403 051 05 10		5-B2	9
403 010 40 20		9-B6	1	403 052 02 53		7-B4	18
403 010 46 33		7-B4	15	403 053 00 30		9-B6	8
403 011 00 77		5-B2	33	403 053 00 32		9-B6	10
403 011 00 80		5-B2	39	403 053 00 52		17-B14	6
403 011 02 21		5-B2	10	403 053 00 96		17-B14	10
403 011 02 71		5-B2	6	403 053 01 20		17-B14	5
403 011 02 84		15-B12	28	403 053 01 30		9-B6	8
403 011 24 10		13-B10	22	403 053 01 32		9-B6	10
403 011 25 10		13-B10	22	403 053 01 52		17-B14	7
403 011 26 10		13-B10	22	403 053 02 30		9-B6	8
403 011 27 10		13-B10	22	403 053 02 32		9-B6	10
403 015 00 80		7-B4	27	403 053 03 25		17-B14	8
403 015 01 60		7-B4	34	403 053 03 31		9-B6	9
403 015 01 80		7-B4	28	403 053 04 31		9-B6	9
403 016 00 05		9-B6	16	403 053 05 31		9-B6	9
403 016 01 21		9-B6	20	403 053 06 22		17-B14	4
403 016 03 21		9-B6	20	403 053 09 01		17-B14	2
403 016 05 05		9-B6	16	403 053 09 31		9-B6	9
403 016 08 05		9-B6	17	403 053 10 31		9-B6	9
403 016 11 20		9-B6	15	403 053 11 31		9-B6	9
403 017 02 71		11-B8	32	403 054 04 05		17-B14	20
403 018 00 82		5-B2	44	403 054 18 01		17-B14	19
403 030 11 20		13-B10	18	403 054 19 01		17-B14	19
403 030 16 37		13-B10	22	403 054 20 01		17-B14	19
403 030 17 20		13-B10	18	403 055 02 20		17-B14	14
403 030 30 17		13-B10	22	403 070 00 66		19-B16	33

INDEX

Mercedes No.	Clayson No.	Page	Fig.	Mercedes No.	Clayson No.	Page	Fig.
403 070 00 95		21-B18	14	403 990 00 01		9-B6	12
403 070 13 66		19-B16	31	403 990 01 01		9-B6	13
403 070 25 33		19-B16	27	403 990 02 01		9-B6	14
403 070 26 33		19-B16	28	403 990 02 04		15-B12	29
403 070 27 33		19-B16	29	403 990 02 19		23-B20	18
403 070 28 33		19-B16	30	403 990 03 04		7-B4	30
403 070 74 33		19-B16	26	403 990 04 04		7-B4	31
403 070 76 33		19-B16	23	403 990 05 01		9-B6	14
403 070 77 33		19-B16	24	403 990 05 40		19-B16	6
403 070 78 33		19-B16	25	403 990 06 01		9-B6	13
403 074 00 59		19-B16	2	403 990 07 01		9-B6	12
403 077 03 12		19-B16	4	403 993 02 01		29-B26	17
403 078 00 74		19-B16	36	403 994 00 34		15-B12	28
403 078 06 86		19-B16	32	403 995 01 44		7-B4	12
403 078 11 41		21-B18	13	403 997 00 32		7-B4	5
403 131 07 80		7-B4	24	403 997 00 32		29-B26	21
403 131 09 21		7-B4	23	403 997 03 50		5-B2	47
403 140 17 01		23-B20	10	403 997 04 20		5-B2	24
403 141 10 80		23-B20	4	403 997 07 20		9-B6	2
403 142 02 12		23-B20	19	615 476 03 26		19-B16	35
403 142 03 80		23-B20	17	615 476 03 26		21-B18	15
403 180 12 15		27-B24	8				
403 180 14 38		29-B26	1				
403 180 17 01		27-B24	1				
403 180 24 38		29-B26	1				
403 181 01 12		27-B24	7				
403 184 00 32		29-B26	16				
403 184 01 56		29-B26	19				
403 184 01 80		29-B26	23				
403 184 02 68		29-B26	2				
403 184 02 80		29-B26	23				
403 187 05 75		27-B24	14				
403 187 11 36		27-B24	13				
403 200 04 02		31-C2	3				
403 200 09 02		31-C2	3				
403 200 35 01		31-C2	1				
403 200 44 01		31-C2	1				
403 201 03 80		31-C2	20				
403 201 04 80	398131	31-C2	23				
403 201 08 31		31-C2	17				
403 201 09 01		31-C2	2				
403 201 09 07		31-C2	5				
403 201 12 01		31-C2	2				
403 202 04 14		31-C2	9				
403 202 06 10		31-C2	12				
403 223 08 41		7-B4	37				
403 586 00 20		31-C2	11				
403 586 50 90		9-B6	11				
403 586 52 20		31-C2	10				
403 586 55 20		31-C2	11				
403 586 56 20		31-C2	10				
403 977 08 20		7-B4	26				

INDEX

Mercedes No.	Clayson No.	Page	Fig.	Mercedes No.	Clayson No.	Page	Fig.
000007 008210		5-B2	22	000933 006103		19-B16	34
000007 008217		13-B10	6	000933 008030		19-B16	5
000007 008223		5-B2	5	000933 008106		31-C2	13
000007 016215		5-B2	23	000933 008130		7-B4	19
000127 006204		7-B4	12	000933 008147		29-B26	6
000127 010202		5-B2	50	000933 008152		7-B4	25
000127 010203		25-B22	26	000933 008152		7-B4	36
000127 012202		25-B22	5	000933 008153		5-B2	40
000127 020201		7-B4	38	000933 010034		25-B22	25
000127 020202		25-B22	26	000933 010035		5-B2	49
000137 008202		5-B2	41	000933 020008		7-B4	39
000137 008202		31-C2	22	000933 020008		25-B22	25
000137 008204		7-B4	20	000934 006007		7-B4	12
000137 008204		7-B4	35	000934 012022		25-B22	6
000137 008204		9-B6	21	000961 012064		21-B18	12
000137 008204		23-B20	5	000993 008153		13-B10	17
000137 008204		29-B26	8	000997 3532		5-B2	18
000137 008204		31-C2	14	005401 999012		5-B2	32
000137 008204		31-C2	19	005401 999012		17-B14	12
000137 010201		7-B4	29	006319 010303		19-B16	9
000137 010201		23-B20	13	007603 006101		21-B18	8
000137 010201		29-B26	24	007603 008109		21-B18	6
000433 008406		7-B4	7	007603 010100		23-B20	20
000471 025000		17-B14	17	007603 014102		21-B18	10
000472 055000		31-C2	8	007603 014103		5-B2	15
000835 012029		7-B4	17	007603 014103		7-B4	13
000908 014001		9-B6	7	007603 014103		9-B6	6
000908 014001		21-B18	11	007603 014103		29-B26	15
000908 016000		5-B2	28	007603 014104		21-B18	19
000908 018000		5-B2	16	007603 016108		5-B2	29
000908 022001		5-B2	26	007603 018101		5-B2	17
000908 022001		9-B6	5	007603 018101		29-B26	12
000908 030002		5-B2	20	007603 018104		19-B16	15
000912 008031		27-B24	9	007603 018104		19-B16	21
000931 008046		7-B4	8	007603 020104		5-B2	19
000931 008053		29-B26	7	007603 022103		5-B2	12
000931 008086		27-B24	12	007603 022103		5-B2	27
000931 008091		31-C2	21	007603 022103		9-B6	4
000931 008125		21-B18	7	007603 026105		29-B26	18
000931 008173		9-B6	22	007603 026111		29-B26	20
000931 008207		25-B20	6	007603 026305		7-B4	4
000931 008220		23-B20	6	007603 030101		5-B2	21
000931 008233		7-B4	8	007604 014106		5-B2	13
000931 008248		31-C2	18	007604 014106		29-B26	22
000931 008314		27-B24	6	007605 022000		5-B2	11
000931 010056		29-B26	25	071511 036016		27-B24	11
000931 010117		19-B16	7	071511 040018		5-B2	48
000931 010126		23-B20	12	080705 016003		21-B18	16
000931 010147		19-B16	8	900170 012012		5-B2	7
000931 010178		29-B26	25	900195 014205		29-B26	26
000931 010369		17-B14	18	900421 008004		5-B2	38
000933 006102		7-B4	12	900421 008004		7-B4	21

INDEX

Mercedes No.	Clayson No.	Page	Fig.	Mercedes No.	Clayson No.	Page	Fig.
900421 010002		7-B4	22				
900421 010002		23-B20	3				
900421 012006		7-B4	33				
900421 014000		7-B4	3				
900421 026000		7-B4	2				
900421 026000		29-B26	3				
915011 008103		21-B18	18				
915013 008002		5-B2	14				
916017 010102		23-B20	9				
916017 020000		23-B20	8				
916017 025000		5-B2	45				
916018 032000		23-B20	14				
917003 026000		29-B26	5				

INDEX

Clayson No.	Mercedes No.	Page	Fig.	Clayson No.	Mercedes No.	Page	Fig.
080496		25-B22	8				
100015		25-B22	23				
100067		25-B22	22				
120065		25-B22	15				
120201		25-B22	18				
140045		25-B22	19				
170003		25-B22	8				
322358		25-B22	24				
331178		25-B22	12				
331470		25-B22	27				
392363		25-B22	7				
392385		25-B22	16				
392406		25-B22	20				
392703	000 477 57 15	21-B18	3				
393519		25-B22	13				
393858		25-B22	17				
393859		25-B22	14				
395826		25-B22	21				
396159	314 155 02 28	25-B22	9				
396160	352 155 01 72	25-B22	10				
396161	314 155 02 71	25-B22	11				
398066	008 997 70 45	29-B26	13				
398067	000 447 47 15	21-B18	4				
398069	000 447 35 80	21-B18	5				
422746		25-B22	7				
422769		25-B22	12				
422772		25-B22	14				

